

**From:** [Turner, Ed](#)  
**To:** [Joy Gober](#)  
**Subject:** Found an issue on the Draft Urban Map  
**Date:** Monday, February 23, 2015 5:33:53 PM  
**Attachments:** [Draft\\_threats\\_Urban\\_NLUD2010.pdf](#)

---

Sorry Joy, Here is another copy of the draft map. On the one sent last week I still had the 6.9km statement under the scale bar. It is now removed.

Thanks, Ed

--

Edwin Turner, Geographer  
GIS Mapping and Analysis Branch  
USFWS Carlsbad Fish and Wildlife Office  
2177 Salk Ave. Suite 250  
Carlsbad, CA 92008  
760.431.9440 x266

[Ed\\_Turner@fws.gov](mailto:Ed_Turner@fws.gov)  
760.431.9440 x266


GRSG 2105 Status Review  
UrbanThreat

 Management Zones

 Current Range

 Bi-State

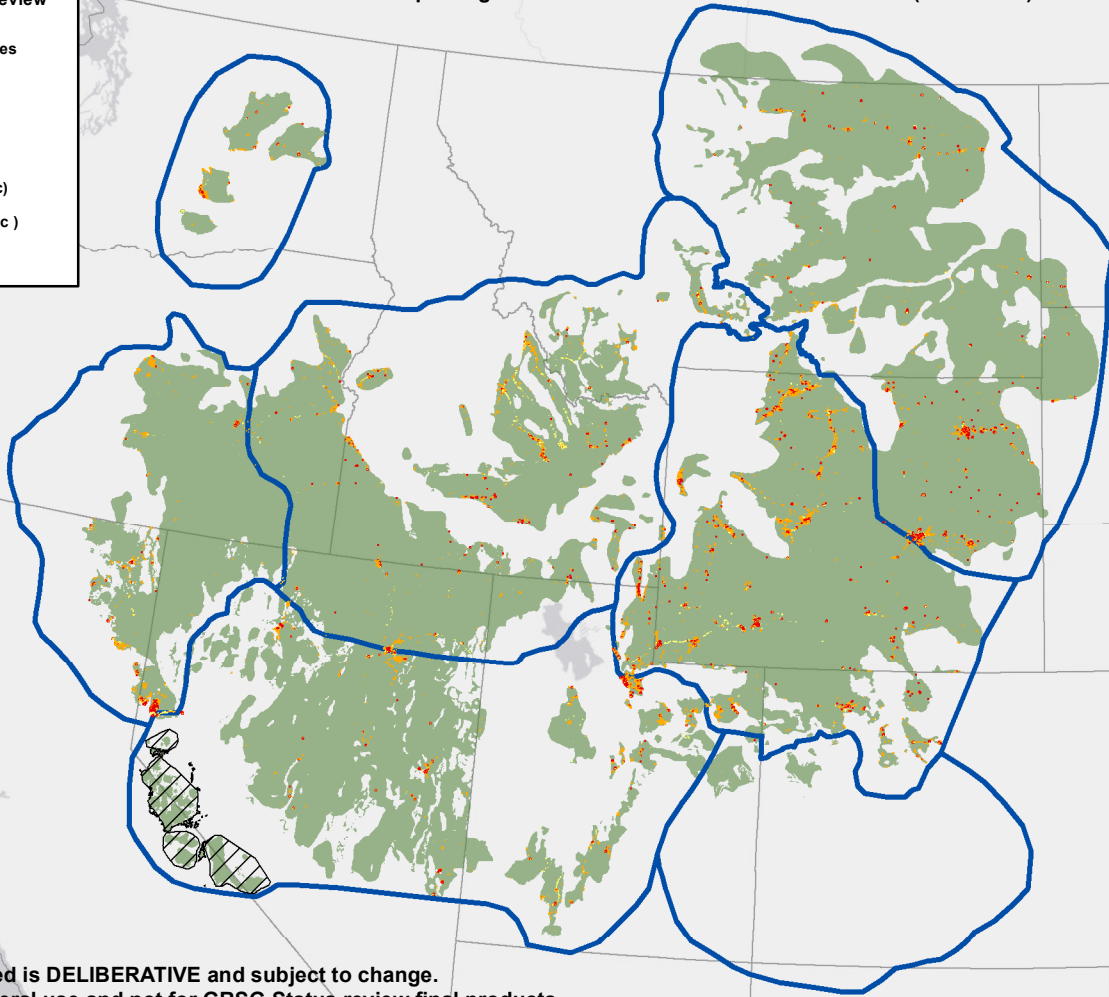
Direct Urban Effects

 Urban ( up to 1 ac )

 Exurban ( 1 - 40 ac )

 Urban Other

DRAFT: Map using Theobald's 2010 National Land Use Data (NLUD2010) altered by USFWS-CFO



Information displayed is DELIBERATIVE and subject to change.

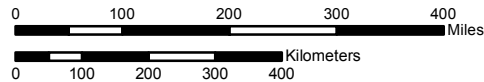
DRAFT: Map for general use and not for GRSG Status review final products

Created By: USFWS R8 Carlsbad

Map Date: 02/23/2015

Source: USFWS, NLUD2010-Theobald

Base Map: Esri, HERE, DeLorme, MapmyIndia, © OpenStreetMap contributors, and the GIS user community



The USFWS makes no warranty for use of this map. Original data were compiled from various sources. Spatial information may not meet National Map Accuracy Standards. This information may be updated without notification.



Datum: NAD 83